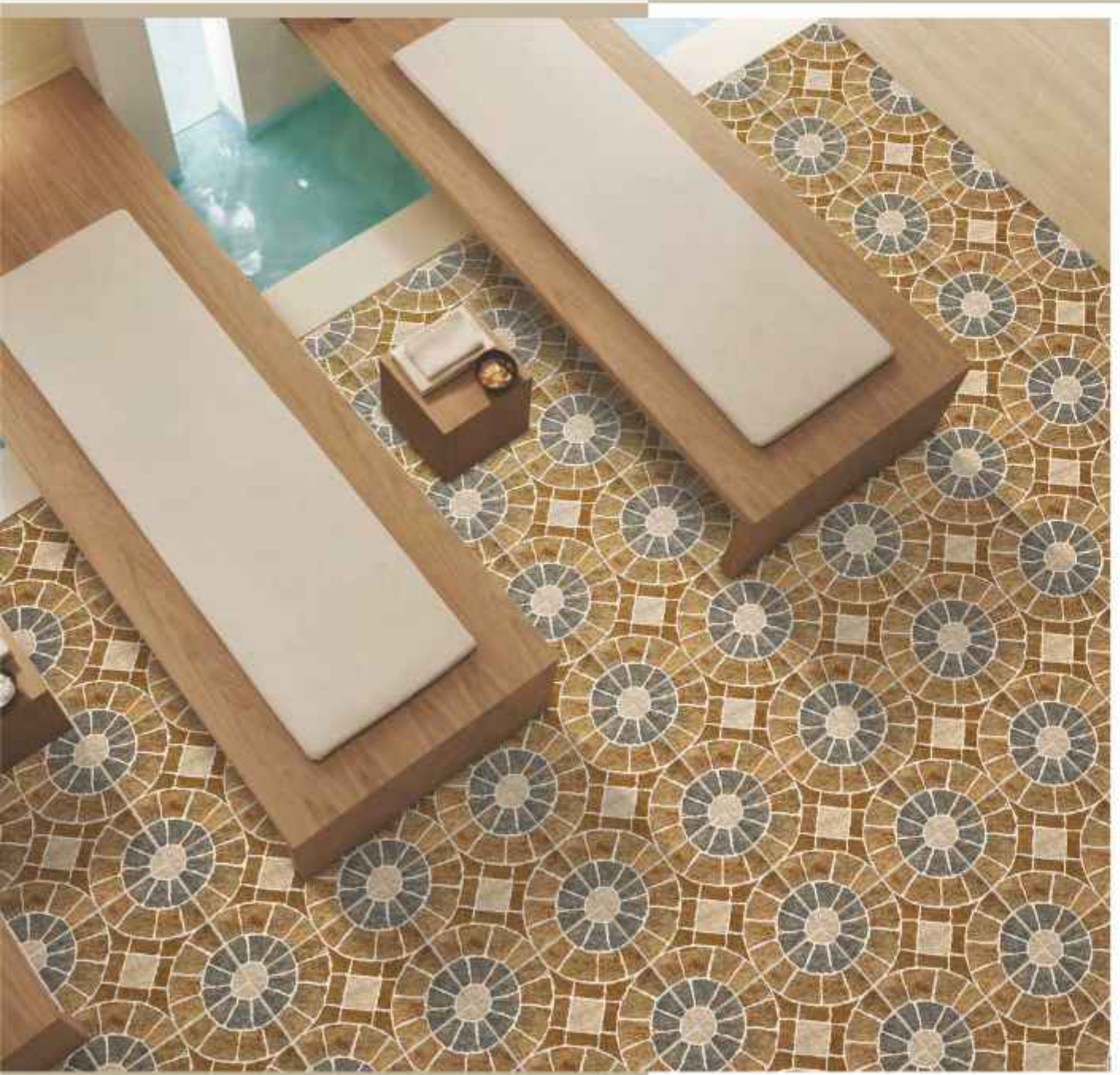


www.somanyceramics.com

PRESENTING
300X300MM



HEAVY DUTY
OUTDOOR & INDUSTRIAL
VITRIFIED TILES

INDEX



NOW
AVAILABLE IN
15MM

**DIGITAL HEAVY DUTY
VITRIFIED TILES** ————— 04

300X300MM
10MM DIGITAL TILES

**HEAVY DUTY
VITRIFIED TILES** ————— 15

300X300MM
15MM ACID & ALKALI RESISTANT

**HEAVY DUTY
VITRIFIED TILES** ————— 16

300X300MM
10MM ACID & ALKALI RESISTANT

DURASTONE

HEAVY DUTY VITRIFIED TILES



Tiles Shown : 300x300mm

ESCORT NATURAL



NEW
Novel Detroit Natural V3
300x300mm



NEW
Novel Danita Brown V1
300x300mm



NEW
Novel Nasca Brown V1
300x300mm



NEW
Novel Detroit Gris V2
300x300mm



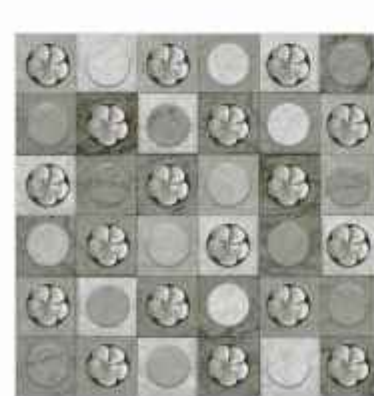
NEW
Novel Danita Gris V1
300x300mm



NEW
Novel Nasca Gris V1
300x300mm



NEW
Novel Twist Wood V1
300x300mm



Decor Gardena Gris V1
300x300mm



Gardena Gris V1
300x300mm



Caxton Brown V1
300x300mm



Caxton Beige V1
300x300mm



Escort Natural V1
300x300mm



Knox Beige V1
300x300mm



Elise Grey Dark V1
300x300mm



Elise Grey Light V1
300x300mm

DURASTONE
HEAVY DUTY VITRIFIED TILES



Tiles Shown : 300x300mm
FLAIX GREY &
LOGAN GREY LIGHT

DURASTONE

HEAVY DUTY VITRIFIED TILES



Tiles Shown : 300x300mm
TACTILE TERACOTTA &
TACTILE JAISALMER

DURASTONE
HEAVY DUTY VITRIFIED TILES



Tiles Shown : 300x300mm
CAPSULE TERACOTTA &
CAPSULE STAR BEIGE

APPLICATION



10mm
THICKNESS

ACID & ALKALI RESISTANT



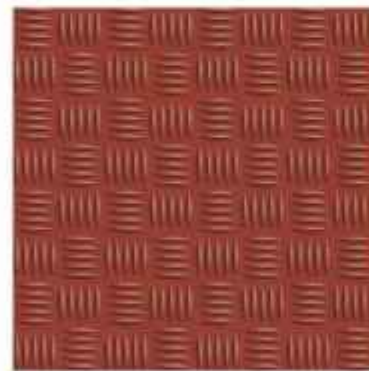
Portico Star Beige
300x300mm 10mm



Portico Teracotta
300x300mm 10mm



Ribbed Stone Star Beige
300x300mm 10mm



Ribbed Stone Teracotta
300x300mm 10mm



City Star Beige
300x300mm 10mm



City Teracotta
300x300mm 10mm

ACID & ALKALI RESISTANT



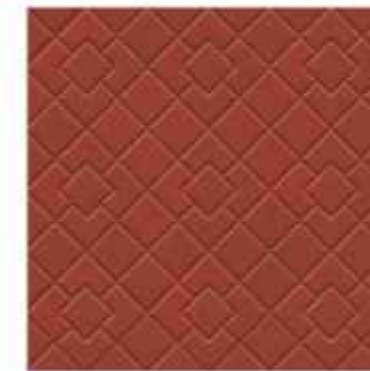
Stepon Beige
300x300mm 10mm



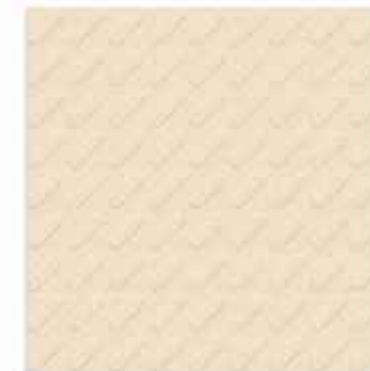
Stepon Teracotta
300x300mm 10mm



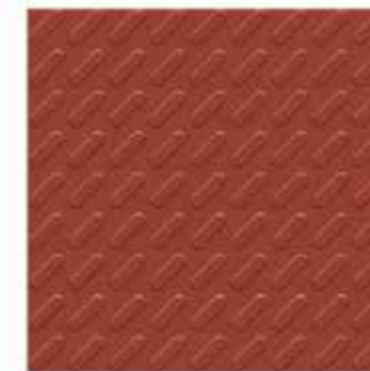
Plaza Star Beige
300x300mm 10mm



Plaza Teracotta
300x300mm 10mm



Capsule Star Beige
300x300mm 10mm



Capsule Teracotta
300x300mm 10mm



Tiles Shown : 300x300mm
PLAIN GREY

APPLICATION



10mm
THICKNESS

ACID & ALKALI RESISTANT



Tectile Star Beige
300x300mm 10mm



Tectile teracotta
300x300mm 10mm



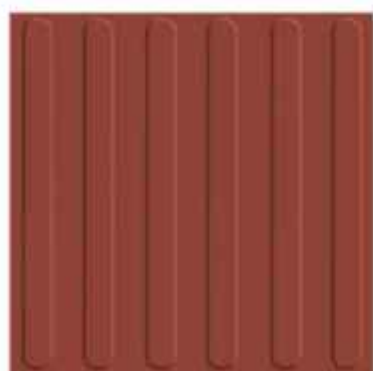
Subway Star Beige
300x300mm 10mm



Subway Teracotta
300x300mm 10mm



Platform Star Beige
300x300mm 10mm



Platform Star Teracotta
300x300mm 10mm

ACID & ALKALI RESISTANT



Slate Star Beige
300x300mm 10mm



Star Beige
300x300mm 10mm



Nestro Beige
300x300mm 10mm



Slate Teracotta
300x300mm 10mm



Plain Teracotta
300x300mm 10mm



Nestro Teracotta
300x300mm 10mm



Slate Grey
300x300mm 10mm



Plain Grey
300x300mm 10mm

KEY FEATURES

 Anti Skid	 Frost Resistance	 Easy To Clean
 High Flexural Strength	 Chromatic Properties	 Suitable For Indoor & Outdoor Application
 Wear Resistance	 Eco Friendly & Recyclable	 Size
 Fire Resistance	 Chemical Resistance	 Thickness
 Heavy Load Bearing	 High Mechanical Resistance	 Floor Tiles

- Toughness: Amongst the toughest tile in Industry with 15 mm thickness
- Assistive design for visually impaired designs: Comes with supportive "Foot Braille" features, to help and assist visually impaired."
- Vitrified Body: Armed with Vitrified body features making it's applicability universal that stands weather, temperature and test of time."
- Durability & Strength: Due to its low water absorption (<0.5%) these tiles are highly durable & very high on strength.
- Anti-Skid properties: Enhanced Slip resistant feature due to Corundum surface finish.
- Abrasion Resistance: Recommended replacement for concrete or polymer based products due to its high abrasion resistance (*manifold).



TECHNICAL CHARACTERISTICS

- 15mm thickness making it toughest in 300X300mm profile.
- Tac Button & Liner Profile= 10mm + 4.5mm
- Fully vitrified unglazed tile.
- Low water absorption, below 0.5%"
- Approved tactile design
- Very high Anti-skid properties (Mohs hardness > 7, with corundum addition)"
- Very high abrasion resistance
- Very high color resistance (*fade proof properties)
- High chemical and stain resistance

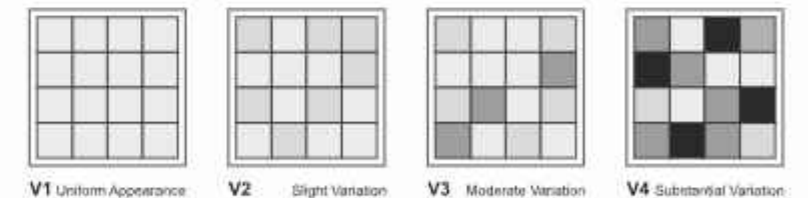
APPLICATION AREA



DESIGN, PATTERN & SHADE VARIATION GUIDE

Current development efforts have made ceramic tiles to resemble and look authentically identical to natural material (Stone, Wood, Fabric), and it has become increasingly difficult in many cases, to distinguish between two.

Recognising this situation, it is necessary to be informed on the grade of design & pattern variation that is expected from these products. As a general reference, the design & Pattern guide below classifies a scale of ranges according to the degree of variation.



The classification is as follow:
V1 Minimal Variation V2 Random Variation V3 Slight Variation V4 Substantial Variation





PACKAGING DETAIL FOR DIGITAL DURASTONE TILES - 300X300MM

Nominal Size	Thickness	Avg. Wt. Per Box (Kg.)	No. of Tiles Per Box	Coverage Area Per Box
300x300MM Digital	10mm	16.0 kg	8	0.72 sq meter / 7.75sq feet

TECHNICAL SPECIFICATION FOR DIGITAL DURASTONE TILES - 300X300MM

Characteristics	Requirement as per ISO 13006 ≤ 0.5% Group B I a	Requirement as per IS 4457 ≤ 0.5%	Our value for 300x300mm Durastone	Test Method
Dimension & Surface Quality				
Length & Width	± 0.3%	± 0.5%	± 0.10%	ISO 10545-Part 2/ IS 4457 Annex B
Thickness	± 5.0%	± 5.0%	± 4.0%	
Straightness of Side	± 0.30%	± 0.20%	± 0.10%	
Rectangularity	± 0.30%	± 0.20%	± 0.10%	
Surface Flatness				
Center curvature (%) (max.Deviation)	± 0.40%	± 0.30%	± 0.2%	
Edge curvature (%) (max.Deviation)	± 0.40%	± 0.30%	± 0.2%	
Corner warpage (%) (max.Deviation)	± 0.40%	± 0.30%	± 0.2%	
Surface Quality	Min. 95 % of tiles will be free from visible defects	Min. 95 % of tiles will be free from visible defects	Min. 95 % of tiles will be free from visible defects	
Physical Properties				
Water Absorption	Av ≤ 0.5 %, Individual 0.6% max	Av. 0.5 %, Individual 0.6% max	Av < 0.5 %	ISO 10545-Part 3/ IS 4457 Annex C
Modulus of Rupture [N/mm ²]	Av 35, Individual 32 min	Av 35, Individual 32 min	Av 38	ISO 10545-Part 4/ IS 4457 Annex D
Breaking Strength in N	1300	1300	Min, 1800	ISO-10545-Part 10
Moisture Expansion in mm/m	Test Method Available	Not Available	Max,0.02	IS 13630 Part-13
Scratch Hardness of surface (Mohs)	N/A	Not Available	Min-6	ISO 10545 -Part 6/ IS 4457 Annex E
Resistance to Surface Abrasion (Class I to V)	Abrasion Class & Cycle passed	Not Available	Class v	ISO 10545-Part 8
Coefficient of linear thermal expansion from ambient temperature to 100° C	Test Method Available	Not Available	Max 6 X 10 ⁻⁶ K ⁻¹ max	ISO 10545-Part 9
Thermal Shock Resistance	Required	Not Available	10 cycle passed	ISO 10545-Part 11
Crazing Resistance	N/A	Not Available	4 cycle passed	ISO 10545-Part 5
Impact Resistance as Co-efficient of Restitution (COR)	Test Method Available	Not Available	0.75-0.90	ISO 10545-Part 12
Frost Resistance	Required	Not Available	100 Cycle Passed	IS 4457: 2007 ANNEX G
Resistance to Concentrated HNO ₃ & H ₂ SO ₄	Not Available	Loss of mass not exceeds 1.5%	Loss Less Than 1%	
Chemical Resistance (glazed Tiles)				
Stain Resistance	Min Class 3	Min Class 1	Min Class 1	ISO 10545-Part 14
Resistance to household chemicals	Min Class GB	Min Class AA	Min Class AA	ISO 10545-Part 13/ IS 4457 Annex F
Resistance to acids and alkalis (with exception of hydrofluoric acid and its compounds)	Declared Value ^f	Min Class AA	Min Class AA	

The reproduction of tiles in this catalogue is restricted to four color printing only and tiles are not in relative sizes, therefore customers are advised to see the physical sample before placing the order. " Technical Specification" for Somany wall & floor tiles are applicable only for premium quality tiles. Please inspect all tiles prior to installation. Company will not entertain complaints once tiles are laid/fixed. Complaints will not be entertained for Borders, Highlighters & Motifs.

PACKAGING DETAIL FOR DURASTONE TILES - 300X300MM

Nominal Size	Thickness	Avg. Wt. Per Box (Kg.)	No. of Tiles Per Box	Coverage Area Per Box
300x300MM	10mm	16.0 kg	8	0.72 sq meter / 7.75sq feet
300x300MM	15mm	18.5 kg	6	0.54 sq meter / 5.81sq feet
300x300MM (Platform & Tactile)	15mm	14.5 kg	6	0.54 sq meter / 5.81sq feet

TECHNICAL SPECIFICATION FOR DURASTONE TILES - 300X300MM (10.0 & 15.0MM) UN-GLAZE

Characteristics	Requirement as per ISO 13006 ≤ 0.5% Group B I a	Requirement as per IS 4457 ≤ 0.5%	Our value for 300x300mm Durastone	Test Method
Dimension & Surface Quality				
Length & Width	± 0.3%	± 0.5%	± 0.10%	ISO 10545-Part 2/ IS 4457 Annex B
Thickness	± 5.0%	± 5.0%	± 4.0%	
Straightness of Side	± 0.30%	± 0.20%	± 0.10%	
Rectangularity	± 0.30%	± 0.20%	± 0.10%	
Surface Flatness				
Center curvature (%) (max.Deviation)	± 0.40%	± 0.30%	± 0.2%	
Edge curvature (%) (max.Deviation)	± 0.40%	± 0.30%	± 0.2%	
Corner warpage (%) (max.Deviation)	± 0.40%	± 0.30%	± 0.2%	
Surface Quality	Min. 95 % of tiles will be free from visible defects	Min. 95 % of tiles will be free from visible defects	Min. 95 % of tiles will be free from visible defects	
Physical Properties				
Water Absorption	Av ≤ 0.5 %, Individual 0.6% max	Av. 0.5 %, Individual 0.6% max	Av < 0.5 %	ISO 10545-Part 3/ IS 4457 Annex C
Modulus of Rupture [N/mm ²]	Av 35, Individual 32 min	Av 35, Individual 32 min	Av 38	ISO 10545-Part 4/ IS 4457 Annex D
Breaking Strength in N	1300	1300	Min, 1800	ISO-10545-Part 10
Moisture Expansion in mm/m	Test Method Available	Not Available	Max,0.02	IS 13630 Part-13
Scratch Hardness of surface (Mohs)	N/A	Not Available	Min-6	ISO 10545 -Part 6/ IS 4457 Annex E
Resistance to Deep Abrasion (In mm ²)	Max 175mm ²	Max 175mm ²	< 100mm ²	ISO 10545-Part 8
Coefficient of linear thermal expansion from ambient temperature to 100° C	Test Method Available	Not Available	Max 6 X 10 ⁻⁶ K ⁻¹ max	ISO 10545-Part 9
Thermal Shock Resistance	Required	Not Available	10 cycle passed	ISO 10545-Part 11
Crazing Resistance	N/A	Not Available	4 cycle passed	ISO 10545-Part 5
Impact Resistance as Co-efficient of Restitution (COR)	Test Method Available	Not Available	0.75-0.90	ISO 10545-Part 12
Frost Resistance	Required	Not Available	100 Cycle Passed	IS 4457: 2007 ANNEX G
Resistance to Concentrated HNO ₃ & H ₂ SO ₄	Not Available	Loss of mass not exceeds 1.5%	Loss Less Than 1%	
Chemical Resistance (glazed Tiles)				
Stain Resistance	Min Class 3	Min Class 1	Min Class 1	ISO 10545-Part 14
Resistance to household chemicals	Min Class GB	Min Class AA	Min Class AA	ISO 10545-Part 13/ IS 4457 Annex F
Resistance to acids and alkalis (with exception of hydrofluoric acid and its compounds)	Declared Value ^f	Min Class AA	Min Class AA	

The reproduction of tiles in this catalogue is restricted to four color printing only and tiles are not in relative sizes, therefore customers are advised to see the physical sample before placing the order. " Technical Specification" for Somany wall & floor tiles are applicable only for premium quality tiles. Please inspect all tiles prior to installation. Company will not entertain complaints once tiles are laid/fixed. Complaints will not be entertained for Borders, Highlighters & Motifs.